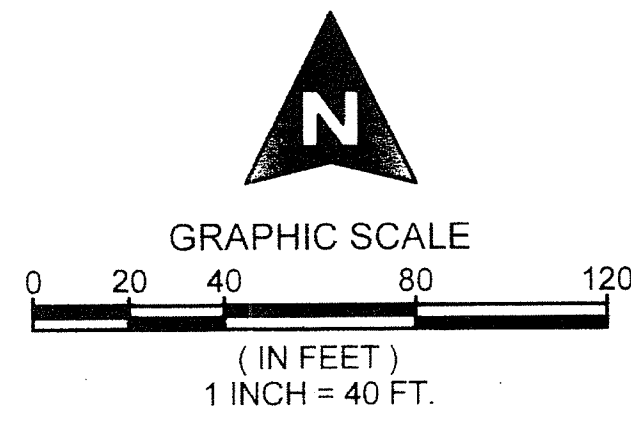


5168.092

ARDEN P.U.D. POD A EAST AND POD B EAST

BEING A REPLAT OF A PORTION OF TRACT "FD", ARDEN PLAT 1, AS RECORDED IN PLAT BOOK 122, PAGES 22 THROUGH 51, PUBLIC RECORDS OF PALM BEACH COUNTY, FLORIDA, AND LYING IN SECTIONS, 28 AND 33, TOWNSHIP 43 SOUTH, RANGE 40 EAST, PALM BEACH COUNTY, FLORIDA.



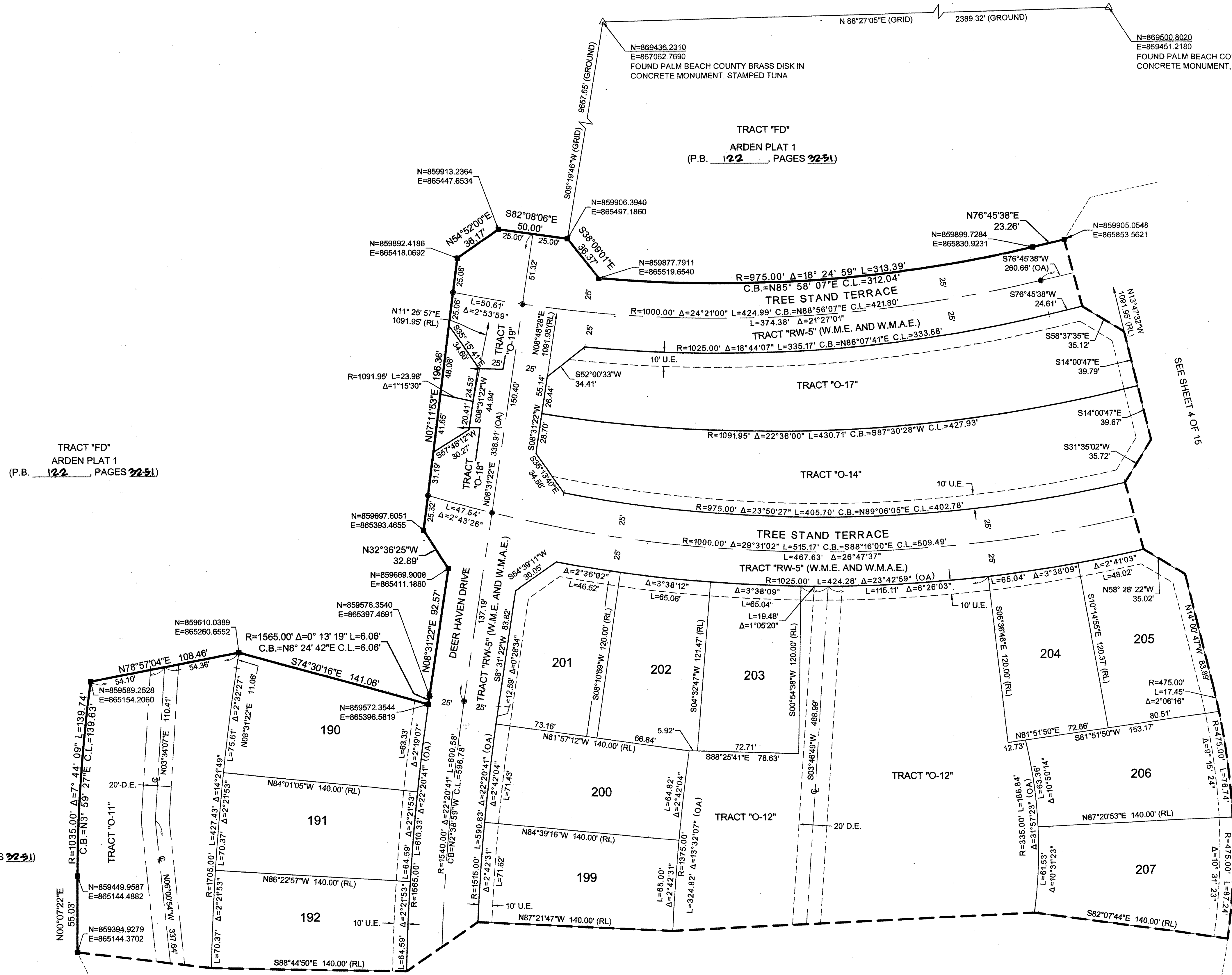
66

COUNTY OF PALM BEACH)
 STATE OF FLORIDA) SS

THIS PLAT WAS FILED FOR RECORD AT
 M. THIS DAY OF
 2016, AND DULY
 RECORDED IN PLAT BOOK NO. _____
 ON PAGE _____ THRU _____

SHARON R. ROCK,
 CLERK AND COMPTROLLER

BY: _____ D.C.



TRACT "FD" ARDEN PLAT 1 (P.B. 122, PAGES 22-51)

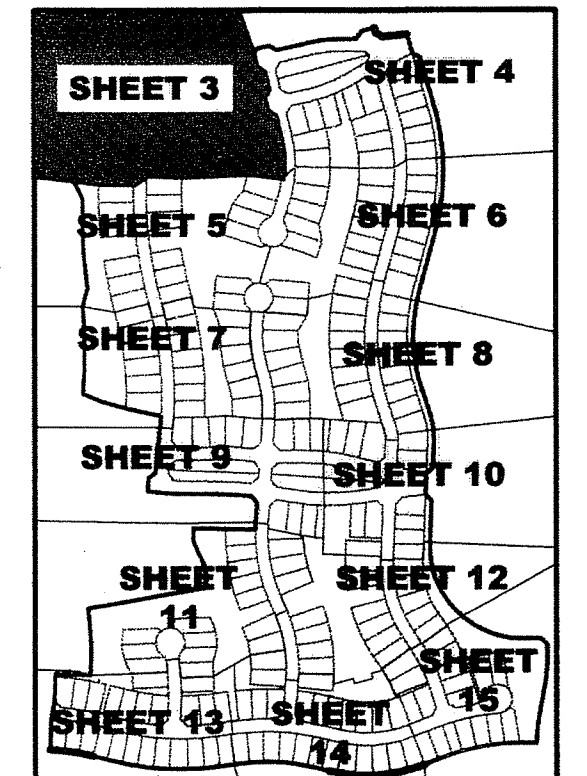
TRACT "FD" ARDEN PLAT 1 (P.B. 122, PAGES 22-51)

SEE SHEET 5 OF 15

SEE SHEET 5 OF 15

SEE SHEET 4 OF 15

SEE SHEET 4 OF 15



KEY MAP NOT TO SCALE

SHEET 3 OF 15



MICHAEL B. SCHORAH & ASSOCIATES, INC.
 1850 FOREST HILL BLVD., SUITE 206
 WEST PALM BEACH, FLORIDA 33406
 EB# 2438 TEL. (561) 968-0080 FAX. (561) 642-9726 LB# 2438

ARDEN P.U.D. POD A EAST AND POD B EAST